



A new standard  
**for an automated milking**



There's no better way to milk...





**Powerful  
Safe  
Efficient**

2



# The Madero M<sup>2</sup>erlin establishes new standards of reliability

Reliable Design  
**Flexible Milking**  
Powerful Technology  
Intuitive Operation

3







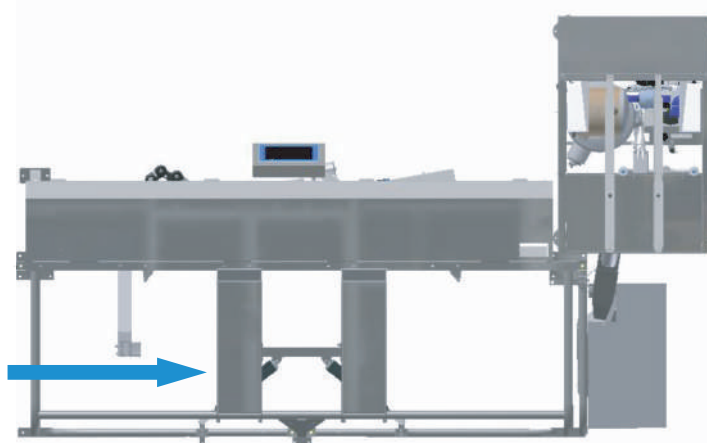
Maximum Flexibility



4

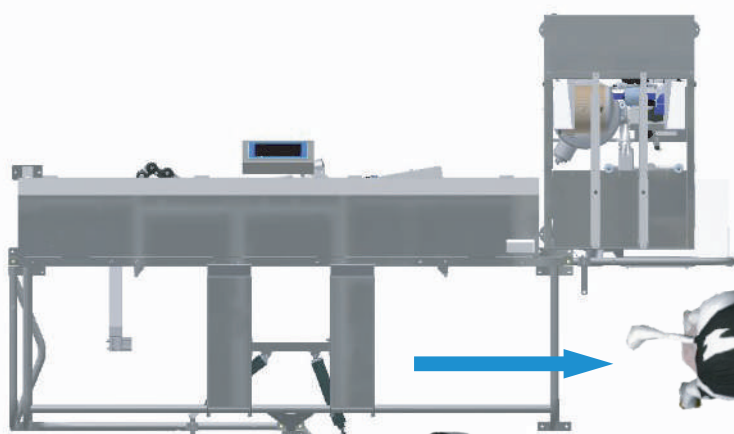
## *DualEntry*

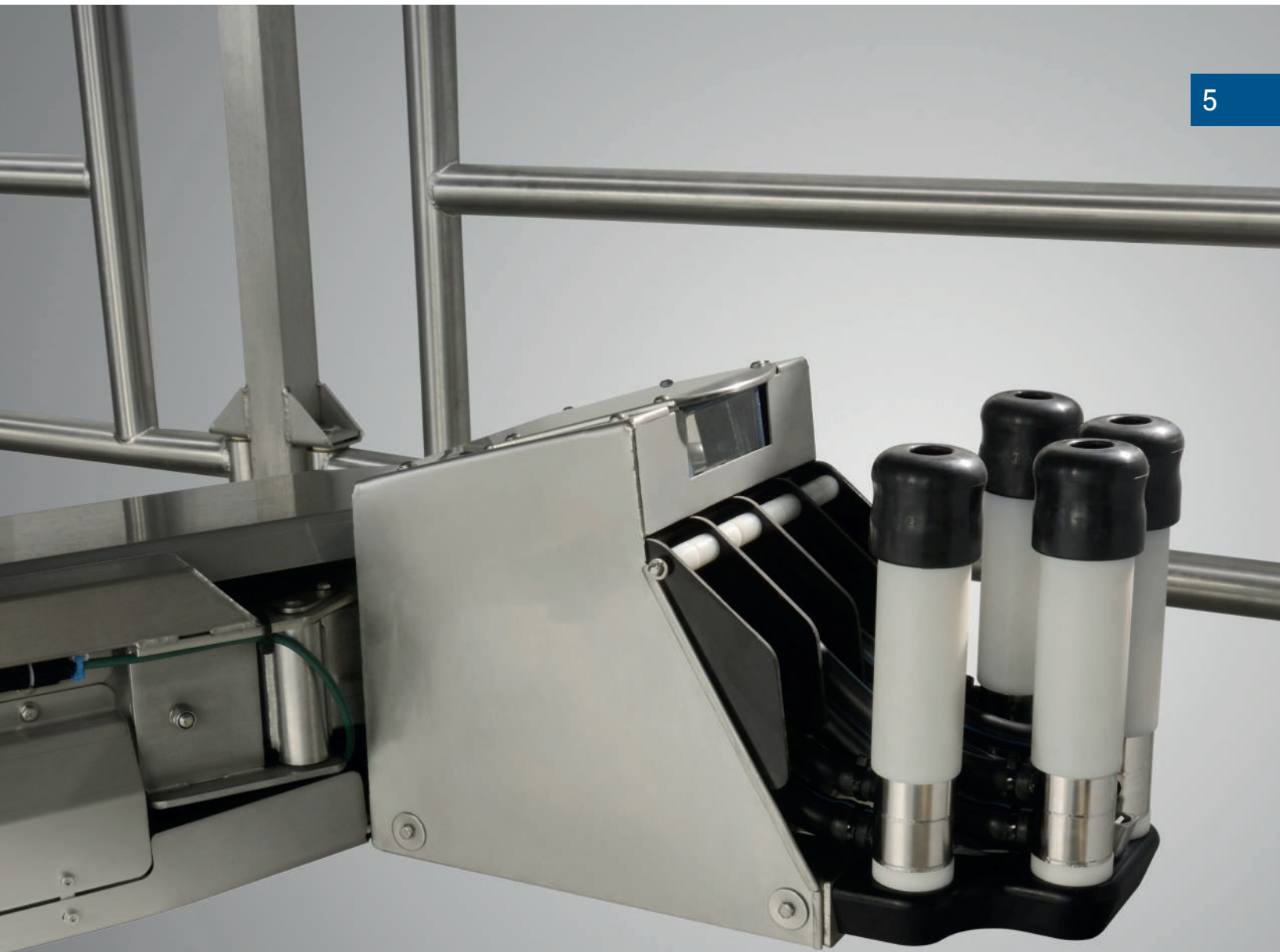
Front or side access



## *DualExit*

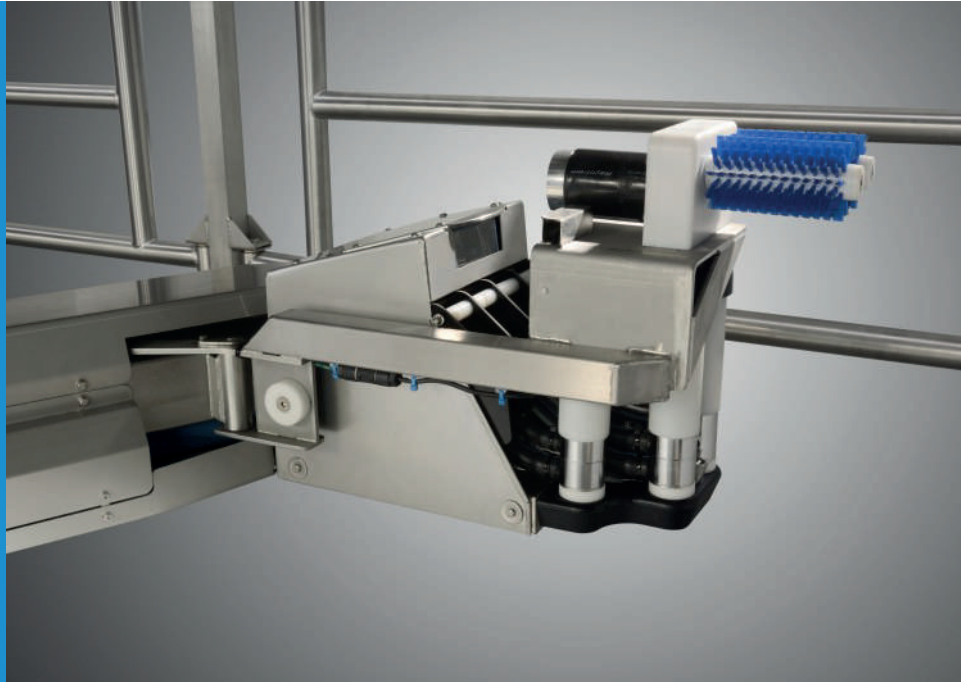
Automatic selection for front or side exit





## EPS Extended Process Space

Its tridimensional connection area is impressive and its robust attaching arm, is now equipped with electric drive for a faster and more precise milking unit attachment. Its low energy consumption make costs minimal.



6





# A new standard for low operation and maintenance costs



7

## Automatically controlled cow-throughput simplifies work processes.

Cow traffic can be automatically controlled with the Madero autoselect system. With automatically controlled doors, animals will move in the desired way.

Cows are deviated through separate ways for their individual treatment. Different performance groups can be selected in different areas of the farm.

### Significant time saving

When milking robots are used, cows are guided automatically to the feeding or resting area depending on the time of the day, the expected milk production and the planned milking times.

## OR WHEREVER YOU NEED.

MerlinView provides a clear overview of the operation of the M<sup>2</sup>erlin system. It has been developed for use on a PC, tablet or smartphone and enables the user to view information on milking, feeding, cleaning and the cow itself. The data shown is both live, displaying exactly what is happening at the robot right there and then, as well as what has happened over the previous few hours. In addition, useful management information is available to provide a reliable picture of the M<sup>2</sup>erlin's daily performance.



8

## FOR A PRECISE DAIRY MANAGEMENT



### AFI ACT II

AfiAct II is the best and most advanced automatic heat detection system. It significantly improves the pregnancy rates and reduces the quantity of open days, it facilitates the bet's visits and also reduces labor and hormonal treatment costs.

This system provides a fine monitoring of the herd's comfort and sensible detection of health problems through resting time, resting bout and rest per bout.



### AFILAB

Is an innovative, compact and efficient real-time milk analyzer. It analyzes the milk components of each cow during milking while being in constant communication with the central computer gathering valuable information that will facilitate decision making in that precise moment. Afilab allows today's dairy farmers and early feeding and health issues identification in the herd.



### AFIMILK MPC

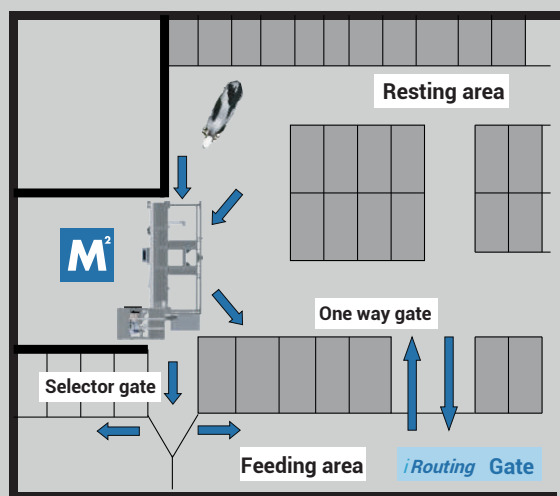
The most precise and reliable electronic milk meter in the market. A powerful tool that provides valuable information regarding animal health, milking efficiency and milking irregularities. Its sensitive and precise detection of conductivity in the milk it's possible to identify mastitis problems early. This allows to take timely decision to avoid losses in milk production and prevent severe damages in the herd's health.



### 4QC

4QC is more than just a sensor. Based on temperature compensated conductivity measurement and counting milk slugs, it provides an accurate indication of infected quarters. The conductivity of the milk is measured per quarter, providing an indication of flow rate and quarter contribution to total yield. All of these values are recorded and stored. This allows you to compare data and highlight large deviations between quarters.





Cow traffic with *iRouting*



Individual boxes-  
variable for each farm

## “Cow traffic”: Flexible and Practical Intelligent routing, also with wellness area

9

A new building can be planned more easily than the conversion of an existing one. For this reason Madero makes no philosophy outside the cow traffic subject, but puts great emphasis on optimal and integral solutions.

Whether you prefer the “free” or “selective” cow traffic concept and want to give a preferential or supplemental feed, there are 4 different variations available for cow traffic.



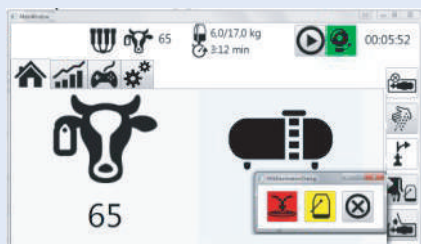
Complete general picture directly in the machine



10

## Well Organized

The automatic milk separator is controlled by the management system and allows the deviation of milk or calostrum that shouldn't go on to the cooling tanks.



## Complete information when milking

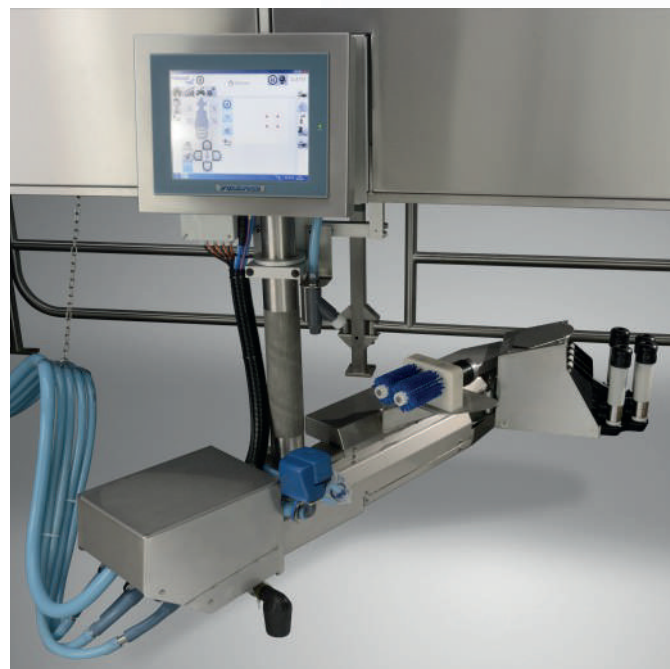
Its modern touch screen provides simple information about the operation status of the machine.

With the definition of settings of the sampling device, prepare the milk control label.

In case of new arrivals, here is where animal manual entry and manual preparation of liners is carried out.

In the touchscreen you'll be able to see milk flow data and milk per quarter. In addition, it shows the data of all the logic milkings and also function symbols.

Its operation is extremely easy.







# M<sup>2</sup>erlin MADERO DataView

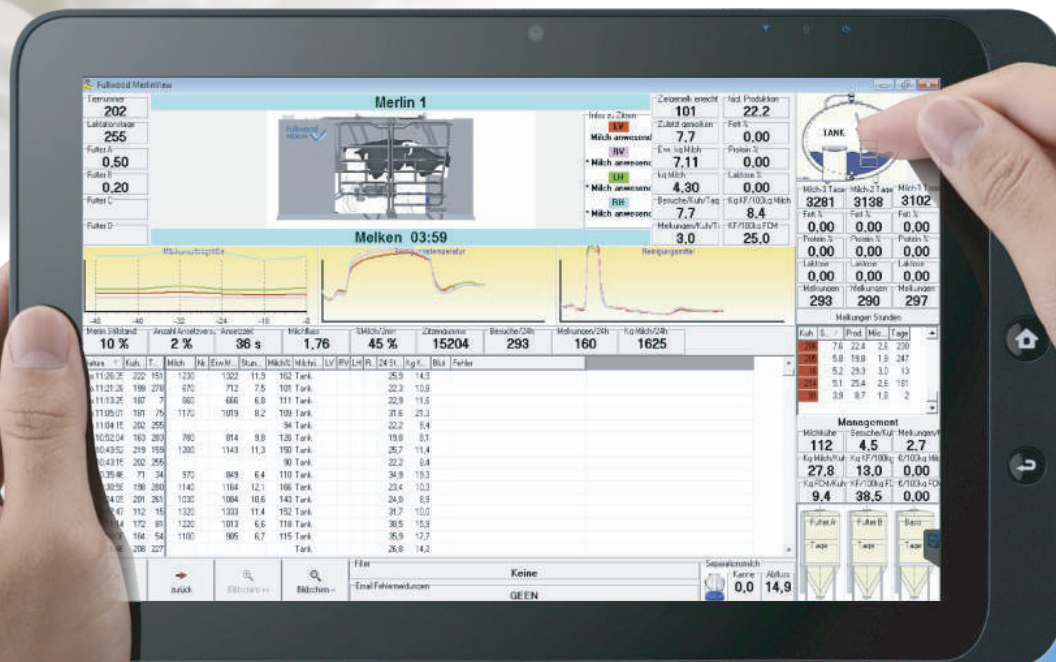
## All the data in your hand

11

M²erlin DataView is an innovative mobile program. It gives a general vision of the processes involved in the automatic milking. The data and milking times required are transmitted and displayed in real time; they are tabulated and highlighted in color according to priorities.

During and after the milking process, M²erlin DataView not only transmits the milk quality but also the performance parameters like milk components and colostrum status. It always has a general view of the supply of individual feeding components.

M²erlin DataView can be used in computers, smartphones and tablets.





---

**Madero Dairy Systems, Inc.**

12236 Cutten Road, Houston Tx  
77066 Houston, TX  
sales@maderodairysystems.com  
[www.maderodairysystems.com](http://www.maderodairysystems.com)

*#KeepMilking*